

These instructions refer to the following products:

Product	Size	Thickness	Installation direction	Seams treatment
Creation WellPoint	See binder	2.5mm	Same	None
Creation GuidePoint	See binder	2.5mm	Same	None
Creation GrovePoint	See binder	2.5mm	Same	None
Creation Continuum	See binder	2mm	Same or 90° (tiles)	None
Creation Living	See binder	2mm	Same	None
Creation 28	See binder	2mm	Same	None
Saga <sup>2</sup>	19.69" x 19.69"	4.6mm	90°	

**Important Note:** Before installing, refer to Gerflor USA Installation Handbook for acclimation, job site conditions, subfloor prep, and other general installation recommendations.

### 1. GENERAL INFORMATION

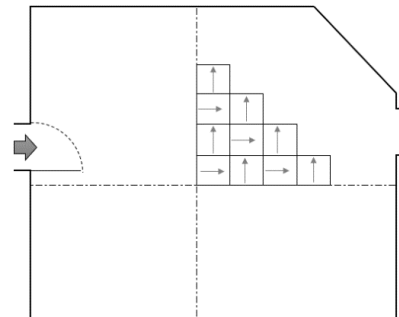
- 1.1. Gerflor flooring products are formulated to withstand high moisture conditions. To perform as designed, the concrete should be properly prepared to create a contaminate free and porous substrate.
- 1.2. Gerflor flooring products are not designed to withstand hydrostatic or osmotic pressure.
- 1.3. *The guidelines offered within this document are not intended to be all inclusive. Only qualified, professional flooring technicians experienced in the field of resilient flooring should proceed with this installation system.*
- 1.4. It is recommended to mechanically prepare the concrete via grinding or bead blasting the surface to achieve a CSP 1+, clean and porous substrate.
- 1.5. Moisture and pH testing must be performed in accordance with ASTM F710-22.
- 1.6. Adhesive bond tests are recommended to ensure adequate bonding to the substrate.
- 1.7. Do not install material that has visible defects or damage. A contractor that installs material that has visible defects or damage assumes responsibility for that material.

### 2. LAYOUT AND INSTALLATION

- 2.1. Boxes are clearly marked with batch numbers and the product should be checked for match before installing.
- 2.2. Inspect all materials carefully to verify that correct colors, lot number, patterns, quality, and quantities have been shipped as ordered. Do not install, cut, or fit any material that has visible defects.

**NOTE:** Tiles have directional arrows and should be installed by alternating the arrows 90° forming a “checkerboard” pattern. Should the tiles be installed in the same direction, the seams will then be more visible, this is an observable fact inherent to the product. Remove tiles from the cartons 16-24 hours prior to installation.

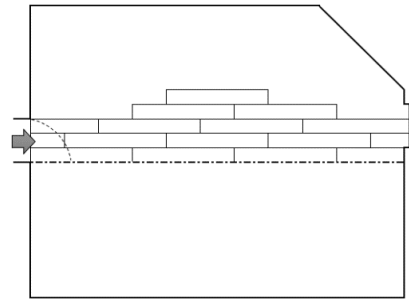
- 2.3. Chalk the center lines of the work area in both directions so that one line is parallel to the length of the room and that the second line is on a 90° angle to the first line.



- 2.4. Position center lines to allow the perimeter tiles to be  $\geq$  to  $\frac{1}{2}$  tile.
- 2.5. Before spreading adhesive, it is recommended to lay one or two rows of tiles along both center lines to check for proper alignment.
- 2.6. **It is recommended to install the tiles in a checkerboard pattern (90°).**
- 2.7. Mix tiles from different boxes to obtain a consistent layout.
- 2.8. After the first tile is in place, begin laying tiles outward along both guidelines.
- 2.9. Press tiles firmly against adjoining tiles and press into the adhesive.
- 2.10. Begin stair-stepping the tiles into the field area.

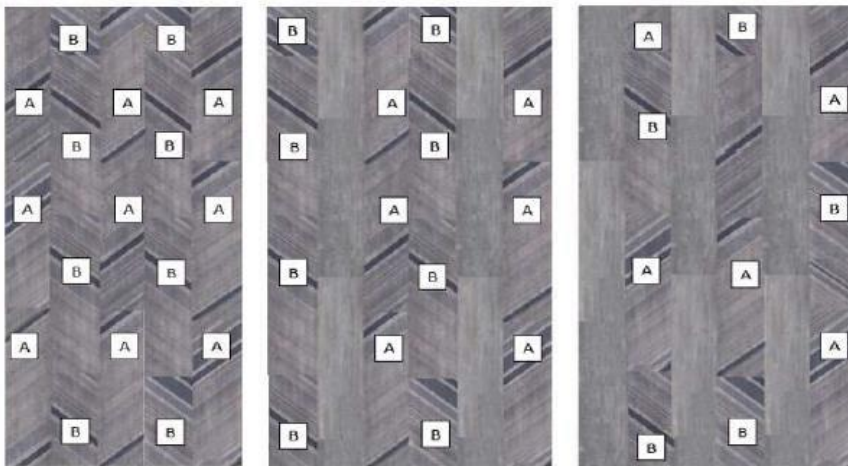
### 3. PLANKS LAYOUT

- 3.1. Chalk the center lines of the work area so that the line is parallel to the length of the room.
- 3.2. Before spreading adhesive, it is recommended to lay one or two rows of planks along center line to check for proper alignment.
- 3.3. Mix planks from different boxes to obtain a consistent layout.
- 3.4. Be certain the planks are installed right on the center lines.
- 3.5. After the first row of planks is in place, begin laying planks outward.
- 3.6. Press planks firmly against adjoining planks and press into the adhesive.
- 3.7. Begin stair-stepping the planks into the field area.



### 4. HERRINGBONE RECOMMENDED LAYOUT

Herringbone only or suggested Herringbone mixed with regular planks

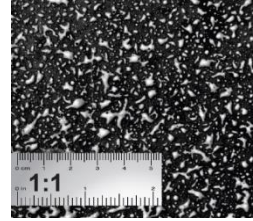


#### 5. INSTALLING USING GERFIX SPRAY ADHESIVE

- 5.1. Always refer to the **Gerfix Spray Adhesive Technical Data Sheet**.
- 5.2. Recommended spray pattern: (150 to 185 sq. ft. per can)

**NOTE: In healthcare applications apply double coverage underneath bed footprint**

- 5.3. Ensure substrate, flooring, and surrounding areas are clean and dust free.
- 5.4. Wipe hand across surface to verify for dust.
- 5.5. If dust transfers, substrate is not clean.
- 5.6. Damp-mop substrate if dust is present.
- 5.7. Protect from overspray with a spray shield, drop cloths, paper, or masking tape.



- 5.8. Shake aerosol can well. Remove white cap.
- 5.9. To ensure uniform adhesion of the entire surface, spray a workable amount of adhesive at one time.



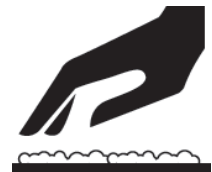
- 5.10. Stand straight up to spray. Hold can upside down, approximately 20-30 inches horizontally from the substrate, aim at floor and press tip with finger.



- 5.11. Walk right to left smoothly to achieve results as seen on photo.
- 5.12. Adhesive should spray out in a wide mist and fall like snow.
- 5.13. Spraying in a sweeping motion may result in an inconsistent spray pattern.
- 5.14. Excess buildup or inconsistent spray pattern on substrate may cause telegraphing.
- 5.15. Avoid extremely heavy application.
- 5.16. To ensure optimal spray pattern, remove any adhesive build up that may occur during the application process.




- 5.17. If overspray occurs, it may be removed with a damp cloth while the adhesive is still wet.
- 5.18. Allow adhesive to dry until there is no adhesive transfer when lightly touched. (10-20 min)
- 5.19. High humidity and/or low temperature increases tack time.



- 5.20. Once the adhesive is dry to the touch, immediately install the flooring. While open, ensure that adhesive is not contaminated by dust.
- 5.21. Roll flooring with a 3 section 100-lbs roller within 1 hour after installation to complete the bonding process.
- 5.22. Always roll seams, at the walls, and under toe kicks with a hand roller to ensure 100% transfer of adhesive.
- 5.23. **Floor is open to all traffic immediately after installation.**

**6. INSTALLING USING GERFIX TPS+ ACRYLIC ADHESIVE**

- 6.1. Always refer to the **Gerfix TPS+ Adhesive technical data Sheet**
- 6.2. Recommended trowel size is 1/32" x 1/16" x 1/32", covering from 170 to 220 sq. ft. per US gallon. 
- 6.3. To ensure uniform adhesion of the entire surface, apply a workable amount of adhesive at one time.
- 6.4. Maintain a uniform spread rate. Replace trowel (or trowel blade) with every pail used.
- 6.5. Immediately after troweling the adhesive onto the substrate use a medium napped paint roller saturated with adhesive to flatten out visible trowel marks and even out the adhesive. **A double arm roller frame is recommended to ensure an even coat of adhesive.**
- 6.6. "Open time" of the adhesive is dependent upon porosity of the substrate, temperature, and humidity. It is important that the installers familiarize themselves with the adhesive before starting the installations.

<b><i>Application Characteristics over Porous Substrates (Non-Porous-see note below)</i></b>		
	<b><i>Open Time*</i></b>	<b><i>Working Time**</i></b>
Gerflor Creation LVT, Continuum, and Saga	20 to 40 minutes (to reach a tacky state***)	Up to 1.5 hours

\* **Open Time:** is the wait time required before installing flooring into the adhesive.

\*\* **Working time:** is the wait time required before installing flooring into the adhesive.


\*\*\* **Tacky:** When the adhesive starts to become translucent and there is light transfer to the fingers when slightly touched.

**Note: For Non-Porous substrates such as existing flooring or metal, let the adhesive dry completely, with no transfer to the fingers when touched, then immediately install the flooring and roll with a 100lb. roller.**

- 6.7. Starting from the center line and working outward, apply the adhesive and install tiles when the adhesive is ready.
- 6.8. Press tiles firmly against adjoining tiles and press into the adhesive.
- 6.9. Periodically, lift the edge of a tile to confirm transfer of adhesive to the back of the flooring. There must be adhesive transfer for the tiles to be adequately secured to the substrate.
- 6.10. Once flooring is placed into the adhesive, immediately roll thoroughly with a 3 section 100-lbs roller in both directions.
- 6.11. Always roll seams, at the walls, and under toe kicks with a hand roller to ensure 100% transfer of adhesive.
- 6.12. During the installation, with the lights on and off, always double check the flooring for bubbles with portable, ambient, and/or fixed lighting.
- 6.13. **Avoid adhesive displacement by prohibiting traffic for a period of 24 hours and 72 hours for rolling loads.**

**7. INSTALLING USING GERFIX 196 HYBRID MULTI-PURPOSE ADHESIVE**

- **GERFIX 196 IS CHEMICALLY REACTIVE. ONCE MIXED, THE POT LIFE IN THE BUCKET IS 2 HOURS; AFTER SUCH TIME, DISCARD ANY REMAINING ADHESIVE**
- **Trowel the adhesive onto the substrate using a 1/32" x 1/16" x 1/32" U notched trowel. Coverage of 425 – 550 sq. ft. per Pail.**
- **It is imperative to use the proper trowel as well as maintaining the proper notch size over the course of the entire floor.**
- **Prepare concrete per ASTM F-710. Concrete should be mechanically prepared to a CSP 1+ to ensure a porous contaminate free substrate.**
- **Inadequate application of adhesive will void the warranty.**
- **Use mineral spirits to remove wet or dry adhesive.**

- 7.1. Always refer to the **Gerfix 196 Adhesive Technical Data Sheet**.
- 7.2. Follow the guidelines indicated on the Technical Data Sheet.
- 7.3. Recommended trowel size is 1/32" x 1/16" x 1/32", covering from 170 to 220 sq. ft. per US gallon. 
- 7.4. Mix 2-part acrylic adhesive part A and part B as recommended by the adhesive manufacturer.
- 7.5. To ensure uniform adhesion of the entire surface, apply a workable amount of adhesive at one time.
- 7.6. Maintain a uniform spread rate. Replace trowel (or trowel blade) with every pail used.
- 7.7. Immediately after troweling the adhesive onto the concrete use a medium napped paint roller saturated with adhesive to flatten out visible trowel marks and even out the adhesive. A double arm roller frame is recommended to ensure an even coat of adhesive.

<b><i>Application Characteristics over Porous Substrates (Non-Porous – see note below)</i></b>		
	<b><i>Open Time*</i></b>	<b><i>Working Time**</i></b>
Gerflor Modular Products	20 to 30 minutes <b>(to reach a tacky state***)</b>	1 to 3 hours

\* **Open Time:** is the wait time required before installing flooring inot the adhesive.  
 \*\* **Working time:** is the wait time required before installing flooring inot the adhesive.  
 \*\*\* **Tacky:** When the adhesive starts to becomes translucent and there is light transfer to the fingers when slightly touched.


**NOTE: For Non-Porous substrates such as metal, existing floorings, etc., allow the adhesive to transition from the wet stage to a tacky-dry stage (no transfer to fingers, when lightly touched) then immediately install the flooring and roll with a 100lb. roller.**

- 7.8. Starting from the center line and working outward, apply the adhesive and install tiles when the adhesive is ready.

- 7.9. Press tiles firmly against adjoining tiles and press into the adhesive.
- 7.10. Once flooring is placed into the adhesive, immediately roll thoroughly with a 3 section 100-lbs steel roller in both directions.
- 7.11. Always roll seams, at the walls, and under toe kicks with a hand roller to ensure 100% transfer of adhesive.
- 7.12. Continually check the flooring for bubbles. To verify there are no bubbles, look down and across the flooring from both a standing and prone position with the lights on and off. The use of a light source at floor level can be helpful in finding any air pockets or bubbles.
- 7.13. Heat welding can proceed after **24 hours from time of installation**
- 7.14. **No heavy foot traffic for 6-12 hours after installation, no heavy rolling loads for 24 hours and no heavy point loads for 72 hours.**
- 7.15. Use mineral spirits to remove fresh or dried adhesive from the surface of the flooring
- 7.16. Following the above steps is of the utmost importance for a successful installation that will resist high moisture levels and be serviceable over the life of the floor.

## 8. INSTALLING USING GERFLOR T-111 POLYURETHANE ADHESIVE

**Note:** T-111 is recommended to be used for areas subjected excessive topical water and heavy rolling loads. Do not allow *any* traffic for 16 hours after the installation for adhesive to cure.

- 8.1. Always refer to the **Gerflor T-111 Polyurethane Adhesive Technical Data Sheet**.
- 8.2. The recommended trowel size is 1/32" x 1/16" x 1/32" 'U' notch, covering 170 – 220 sq. ft. per US gallon. 
- 8.3. Mix polyurethane adhesive part A and part B as recommended by the adhesive manufacturer.
- 8.4. Installers must be familiar with the use of polyurethane adhesives. To ensure uniform adhesion of the entire surface, only spread a workable amount of adhesive at one time. Maintain a uniform spread rate. Replace trowel (or trowel blade) with every pail used.
- 8.5. There is no 'open time' needed with this type of adhesive, the flooring must be applied into the wet adhesive within 40 minutes.
- 8.6. Starting from the center line and working outward, apply the adhesive and install tiles immediately.
- 8.7. Press tiles firmly against adjoining tiles and press into the adhesive.
- 8.8. Do not stand, kneel, or walk on the tiles. The use of kneeling board and walking board is mandatory to eliminate adhesive displacement.
- 8.9. Always roll seams, at the walls, and under toe kicks with a hand roller to ensure 100% transfer of adhesive.
- 8.10. Clean up any adhesive that gets on the surface of the tiles with denatured alcohol immediately.
- 8.11. Adhesive transfer must be **100% wet transfer** to the backing of the flooring. Trowel ridge marks should not be visible on the back of the flooring or on the subfloor. If the adhesive skins over or dries it must be scraped up and new adhesive applied.
- 8.12. Using a 100-lbs sectional steel roller, roll the flooring in the width first and then the length



## INSTALLATION INSTRUCTIONS

### CREATION LVT, CONTINUUM, AND SAGA<sup>2</sup>

to ensure adhesive transfer and to evacuate all air that can lead to bubbles. Optimally there should be an individual tasked solely with this responsibility.

- 8.13. Continually check the flooring for bubbles. To verify there are no bubbles, look down and across the flooring from both a standing and prone position with the lights on and off. The use of a light source at floor level can be helpful in finding any air pockets or bubbles.
- 8.14. **Avoid adhesive displacement by prohibiting ALL traffic for a period of 16 hours and 36hours for rolling loads.**
- 8.15. **The use of walking 4' x 8' x 1/4" Masonite boards and kneeling boards are mandatory to protect from adhesive displacement during installation.**

#### **9. ONCE THE INSTALLATION IS COMPLETED**

- 9.1. Perform a visual inspection of the project.
- 9.2. Verify every welded seam.
- 9.3. Repair every imperfection before leaving the project.
- 9.4. Make sure that every vertical obstacle such as doorframes are well trimmed and sealed with an acrylic, silicone, or equivalent sealant product.
- 9.5. To maximize the aesthetic appearance and serviceability of the newly installed flooring, provide your customer with a copy of the **Gerflor USA Maintenance Instructions**